

## SCCD超级智能大幅面全景摄像定位激光切割机

### SCCD SUPER CAMERA POSITIONING LARGE FORMAT AUTOMATIC FEEDING LASER CUTTING MACHINE



JS-1610ST-SCCD



智能全景摄像视觉定位系统  
Intelligent panoramic camera vision positioning system.



高精度双轨异步切割系统  
High-precision dual-track asynchronous cutting system.



自主研发的高效率传动系统  
Self-developed high-efficiency transmission system.



简易且人性化的操作面板  
Simple and humanized operation panel.



#### 产品特点 Product features

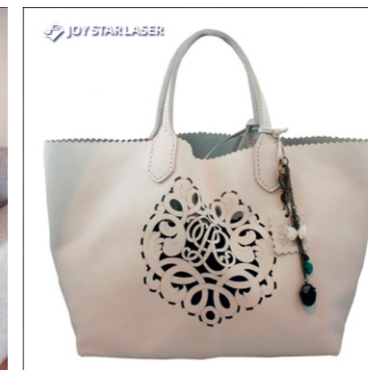
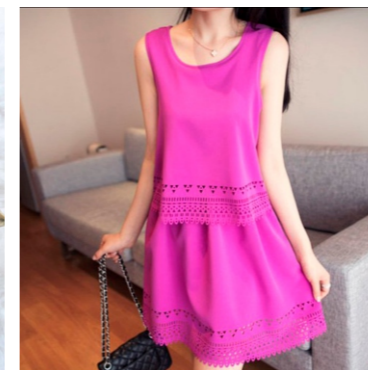
- 大幅面激光裁片系统
- Large working area laser cutting system.
- 智能双梁异步切割系统 全景摄像定位
- Smart dual-head async cutting system, panoramic camera location.
- 支持任意角度切割, 切割精度高
- It supports cutting at any angle with high cutting precision.
- 自动视觉识别软件运行
- Automatic vision recognition software running.
- 自动送料(可选配), 切割任何类型的纺织品
- Automatic material feeding (Optional) , cutting any type of textile.
- 大量节省劳动人工, 节省材料, 替代7-8名切割工人
- Save a lot of labor and materials, 7-8 cutting workers replaced.

#### 应用行业 Application industry

适用于电脑绣花裁剪、手袋箱包业、制鞋业、毛绒玩具业、塑胶皮革业、广告业、包装行业、工业礼品业、印花服装、印花鞋面、3D飞织鞋面, 编织图案, 绣花商标, 热转印等众多行业。  
Suitable for computer embroidery and cutting, handbags and luggage industry, footwear industry, plush toy industry, plastic leather industry, advertising industry, packaging industry, industrial gift industry, printed clothing, printed shoe uppers, 3D flying shoe uppers, weaving patterns, embroidery Trademarks, heat transfer printing and many other industries.

#### 适用材料 Applicable materials

皮革、pu革、绒面革、合成革、布料、毛绒布料、毛毡布、网布、无纺布、有机玻璃、塑胶、橡胶、环氧树脂、亚克力、纸张、毛料、竹制品、双色板、ABC板、PVC板、纤维板及复合材料等非金属材料。  
Leather, pu leather, suede leather, synthetic leather, cloth, plush cloth, mesh, non-woven fabrics, felt cloth, plexiglass, plastic, rubber, epoxy resin, acrylic, paper, wool, bamboo products, two-color board, ABC board, PVC board, Non-metallic materials such as fiberboard and composite materials.



#### 技术参数 Technical Data

机器型号 Model	加工面积 Processing Area	整机功率 Total Power	机器尺寸 Dimension	兼容模式 Compatible	重量 Weight	电源 Power Supply	环境要求 Environmental Requirements
JS-1610ST-SCCD	1600×1000 (mm)	3400w	2250×1840×1900 (mm)	Windowx 7 8 10 Plt, Ai, Dxf, Dst, Bmp, Jpge	750kg	Ac220v±0%, 50Hz 60Hz	温度 Temp 10-30°C 湿度(无结露) Humidity 30-80%